



Mipa WBC Mixing System

WBC

Successful Car Refinishing

mipa



Experience and Innovation

Water-based topcoat systems are **state of the art** since the implementation of the VOC-Directive in Europe and other parts of the world. In the OEM segment, this standard applies even longer. But the technical innovation of these systems goes on. Experiences over the last years and decades as well as the development of new raw materials lead to a consistent improvement of Mipa paint systems.



WBS
auf Wasserbasis
Water based





Economy and environmental protection with Mipa WBC

After extensive developments, the water-based Mipa WBC basecoat system satisfies not only current legal requirements, but, above all, MIPA succeeded in increasing the reliability by matured waterborne paint technology and in eliminating quality disadvantages of former generations of water-based paints. In combination with easy-to-use colour matching systems as well as with easily operated mixing and dosing units, the basecoat system is embedded in a complete assortment of professional paint materials for any applications.

Mipa WBC allows not only creating high-quality finishes but also achieving economic advantages when applied appropriately. Mipa WBC proves that ecology and economic success are not necessarily a contradiction.





Mipa WBC – the smart solution

Mipa WBC base tinters **don't have to be stirred**. It is sufficient to shake the required tinters just shortly before dosing. For this reason, the tinters can be stored at constant temperature in common shelves. Tin sizes have been selected considering the consumer habits, which helps to avoid capital commitment and the expiration of shelf life. The intermixing of tinters without any additional binders, activators or other additives enables our customer to produce paints for increasingly smaller surfaces to be refinished.

Easy application

Mipa WBC can be applied in conventional spray booths and common spray guns whereby further investments are avoided. The ready-mixed paint has no pot life. Residual quantities are therefore reusable for a long time which results in declining waste disposal costs.

Colour- and product reliability

By adding 10-20 % of Mipa WBC-Thinner, which is the only additive, to the base tinters, the viscosity is adjusted for spray application. The addition of this small amount **without any other additives** increases the liability of the product. The colour can be identified immediately in the mixture and during the application. The high thixotropy of the base tinters lowers the risk of colour deviations caused by insufficient stirring. Therefore, the desired colour is achieved easily and safely and can be assessed immediately.

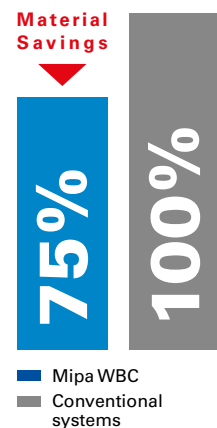




Highest efficiency + Covering power = Time savings

Mipa WBC is applied in 2 layers with a short flash-off. The application of a subsequent half coat results in a perfect colour.

Due to its fast final drying, this application process is as fast as other systems without flash-off between coats. In comparison with conventional systems, there are no disadvantages in the overall processing time thanks to the elevated hiding power. The material consumption can even be reduced by at least 25 %.



Environment protection and cost advantages

Because of the organic solvent content of Mipa WBC that is significantly below the legal limits regulated by the Directive currently in force and discussed for the future, as well as the lower consumption, the total emission of solvents in body shops are reduced considerably. This effective environmental protection is anyway cost-neutral and may even lead to higher profits since savings in terms of costs for waste disposal and air purification can be achieved.



The perfect colour

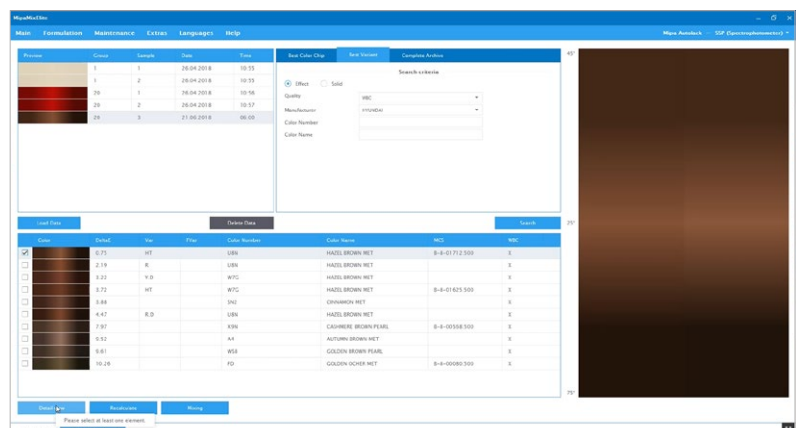
The choice of a **correct colour shade for car refinishing** is the key for a visually perfect result. Searching this colour shade is time consuming and difficult because of numerous information to be considered and because of the ever increasing choice of possible shades.

MIPA offers **professional and innovative tools** to the user, in order to shorten the search and to lead to a matching result:

Mipamix Elite

The formulation software Mipamix Elite compares colour masters, which have been read at several angles by a portable spectrophotometer, to a formulation database. There are over 20 times more colours to be compared than in a colour chart. Measurements and recommended formulations can be compared on the screen.

If necessary, Mipamix Elite computes corrections of the recommended formulations to match the colour even more exactly. Once the desired formulation has been determined, Mipamix Elite guides you safely and easily through the mixing process and provides the possibility to prepare additional products ready for use. Measurements, formulations and mixtures can be saved and be therefore reproduced at a later time.





Mipa Color System

All colour samples are provided with the Mipa Color System colour code, which follows this system:

B7 - 341 - 60

|
Basecoat
System

|
Colour group
similar to RAL

|
Colour number

///
MIPA COLOR SYSTEM
///

The **colour card system** offers thousands of colour samples. All variants can be found in one system and switching between different versions and annual swatches is no longer necessary. Since the colours are sorted by colour groups and not by car brands, all variants and very similar colour shades can be found directly next to each other which allow the user to react easily to colour deviations. The colour samples are produced **with highest precision** using the original paint. An innovative closing and storing mechanism enables a comfortable comparison with the vehicle as well as an easy and fast addition of new variants delivered regularly.



Highest quality

In addition to Mipa WBC-basecoats, numerous other products ensure not only car coatings of the highest quality but also the compliance with regulations and consequently with effective environmental protection:

...and even more waterborne solutions

MIPA focus on waterborne products also in the field of substrate pre-treatment. Surfaces to be painted are cleaned with **Mipa WBS Reiniger**.

Mipa WBS 1K-Grundierfiller represents the perfect first step to a successful car refinishing due to its very good adhesion and excellent corrosion protection properties. **Mipa WBS Reiniger FINAL** has been developed particularly for cleaning the basecoat layers prior to recoating with Mipa clearcoats and completes the coating system of water-based and VOC-reduced High-Solid products. Moreover, the waterborne basecoat Mipa WBC can be applied as single layer without clearcoat finish e.g. for interior coatings thanks to the use of the **Mipa WBC-hardener**.

The **future of car coating** has begun not only in the range of topcoats. MIPA offers a complete waterborne range which is in itself coherent.



Mipa 2K-HS Clearcoats

Only the clear coating provides the effect characteristics of a basecoat and its durable protection. MIPA offers different variants of clearcoats as VOC-compliant solutions for all kind of users and application areas.

The combination with Mipa 2K-HS hardeners leads to brilliant surfaces with excellent flow. The resistances against any environmental influences achieve best results in comparison to former MS systems.



mipa

Professional Coating Systems